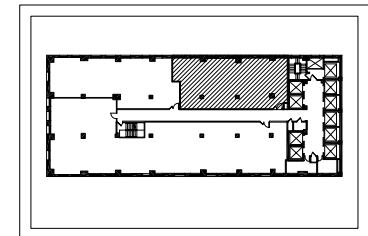
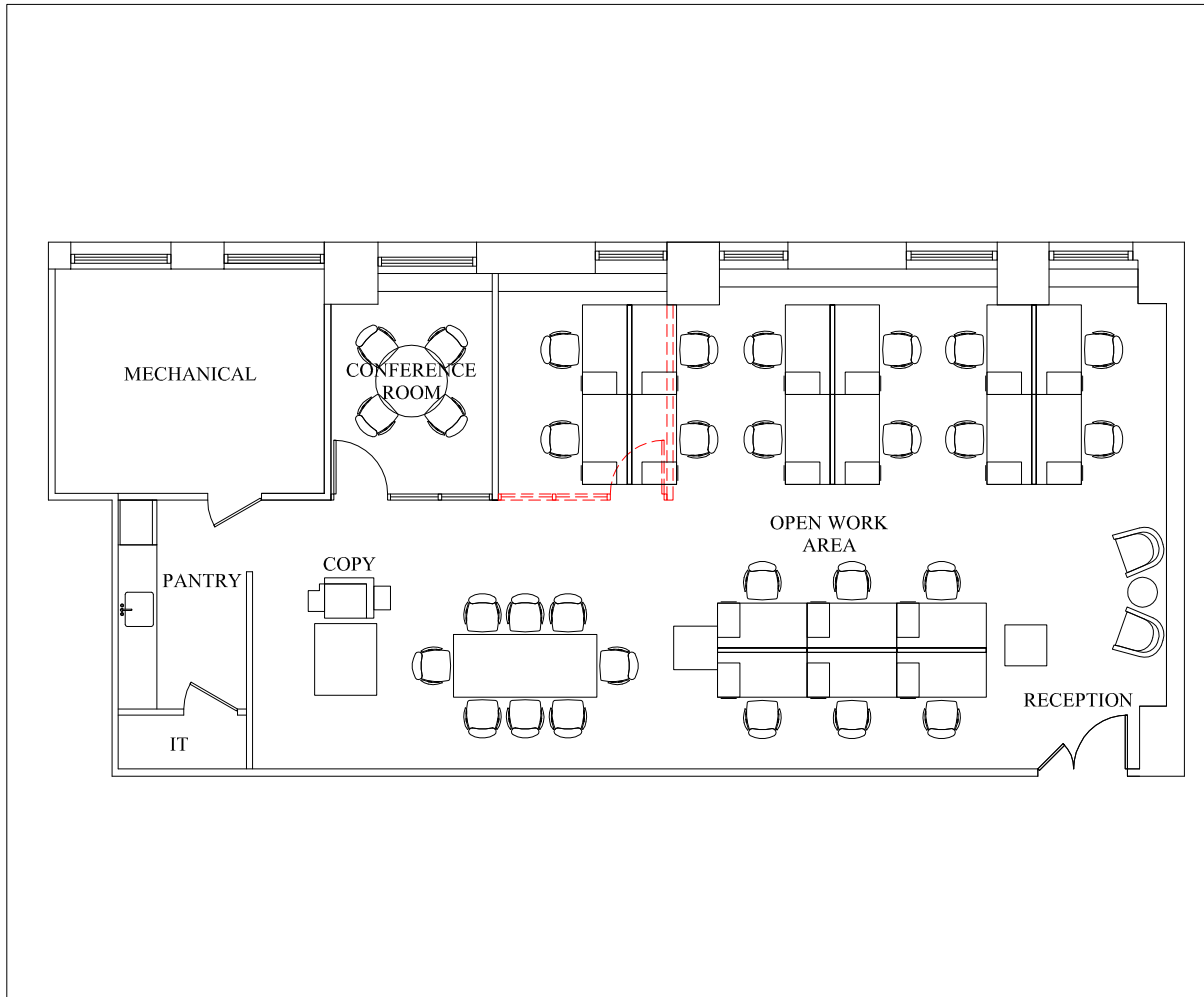


37th FLOOR

SUITE 3730:	2,702 RSF
CATEGORY	QUANTITY AS SHOWN
OFFICE	-
WORKSTATION	18
TOTAL	18
CONFERENCE ROOM	1
PANTRY	1
COPY	1
IT	1
MECHANICAL	1

----- FUTURE



ONE GRAND CENTRAL PLACE

One Grand Central Place

60 EAST 42ND STREET
NEW YORK, NY 10165

SUITE 3730 2,702 RSF

EMPIRE STATE
REALTY TRUST

empirestaterealtytrust.com

10/07/19

ESRT
LISTED
NYSE

Member
REBNY
REAL ESTATE BOARD OF NEW YORK