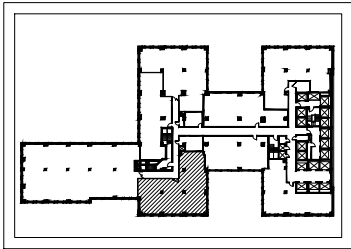
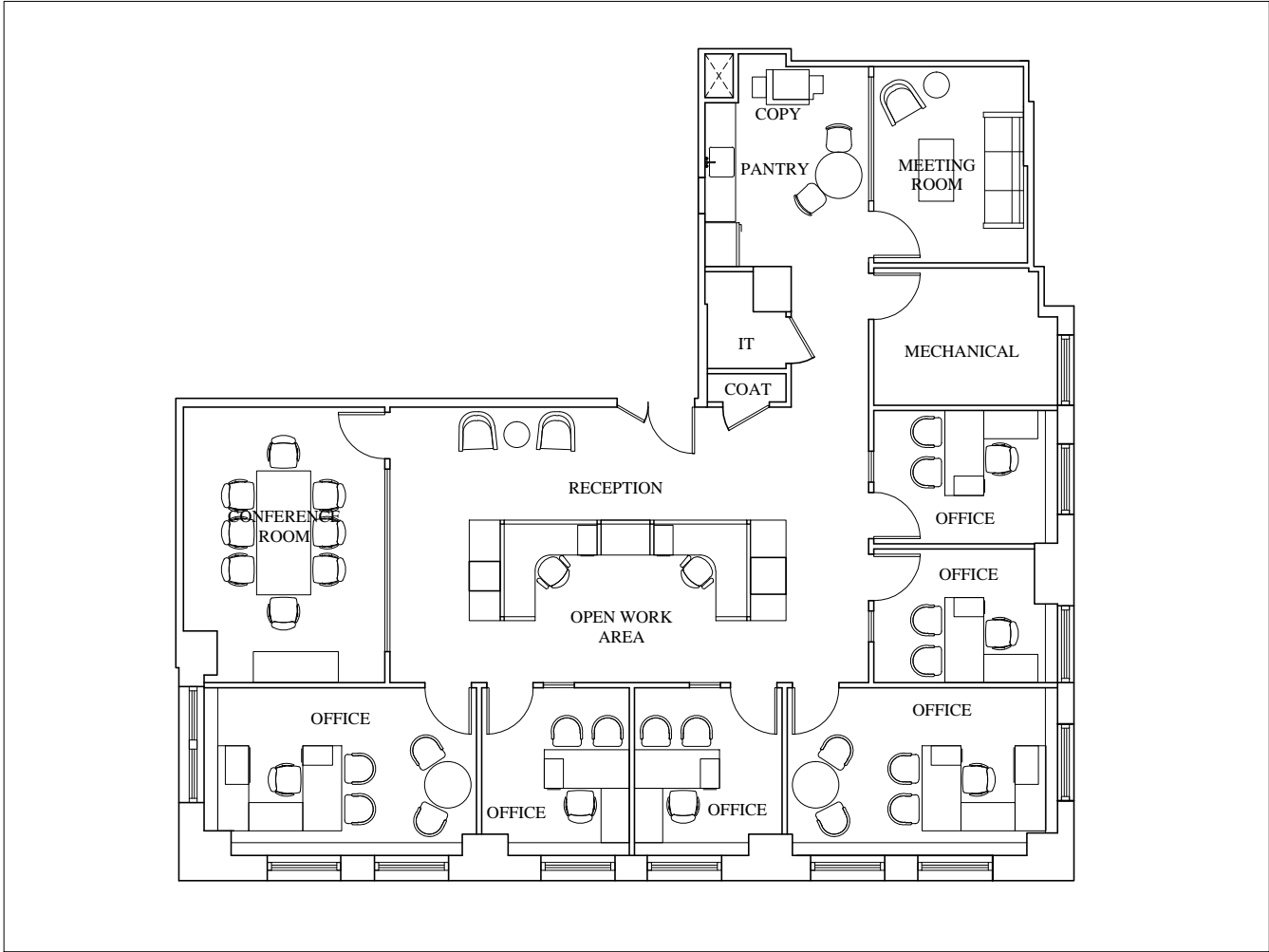


25th FLOOR

SUITE 2514:	3,653 RSF
CATEGORY	QUANTITY AS SHOWN
OFFICE	6
WORKSTATION	2
TOTAL	8
CONFERENCE ROOM	1
MEETING ROOM	1
RECEPTION	1
COAT	1
PANTRY	1
COPY/ FILE	1
IT	1
MECHANICAL	1



ONE GRAND CENTRAL PLACE

One Grand Central Place

60 EAST 42ND STREET
NEW YORK, NY 10165

SUITE 2514 3,653 RSF

PROPOSED
03/22/18

EMPIRE STATE
REALTY TRUST
empirestaterealtytrust.com

ESRT LISTED NYSE Member **REBNY**
REAL ESTATE BOARD OF NEW YORK